

# µw expedition to JO72AK 01.-03.06.2018

QRV: 23cm up to 47GHz



All the equipment is packed in the car....

First stop on Thursday was in the „Spreewald“ area near the city of Lübbenau.

The **Spreewald** is a wellknown part of the German state of Brandenburg located about 100 km southeast of Berlin . It is known for its traditional irrigation system, consisting of more than 200 small canals (called "Fließe"; total length: 1,300 km ).







In the evening we reached our hotel in Fürstenwalde/Brandenburg (JO72AI)





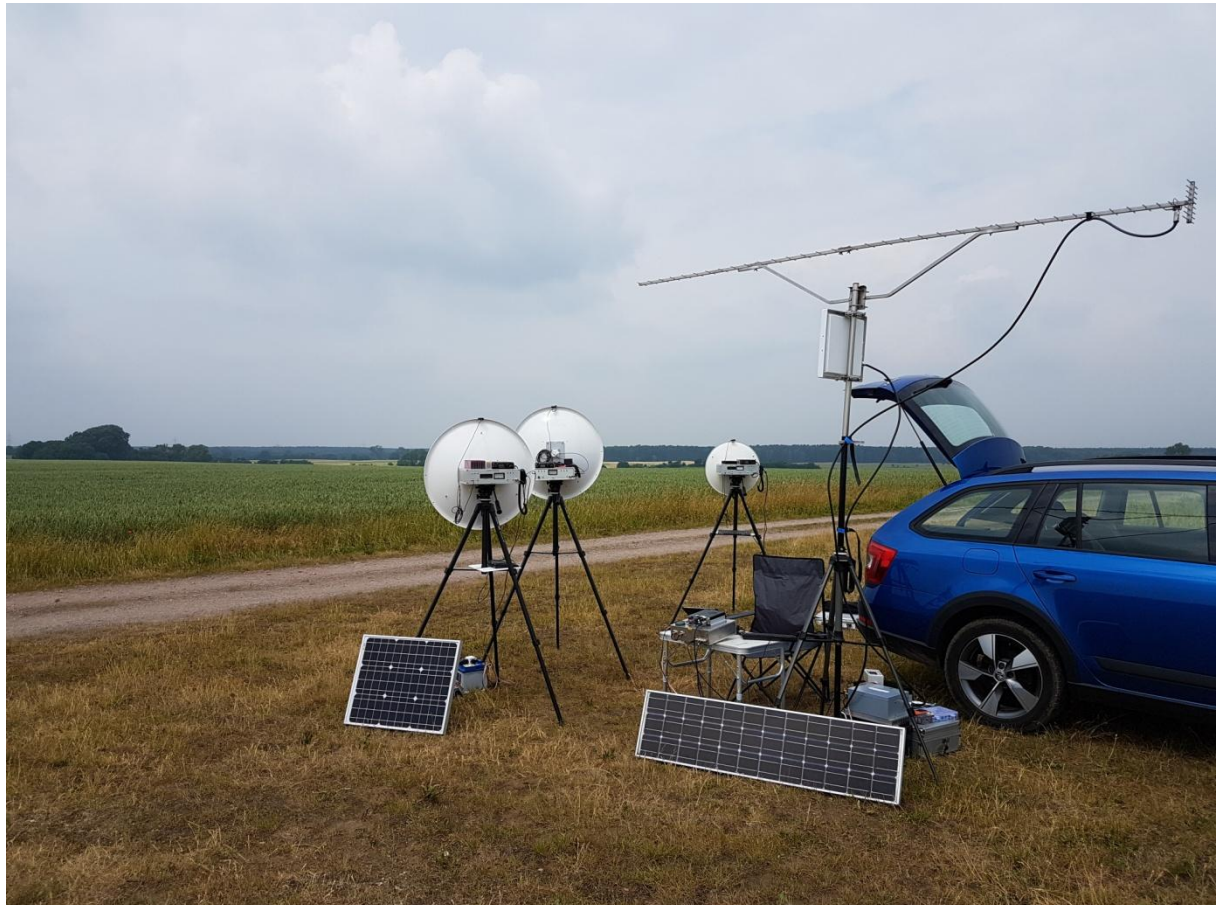
Plan for Friday morning was a visit at the mountain „Teufelsberg“ (devil mountain 102,1m ASL) in Berlin – a former NSA listening station







On friday afternoon first QSOs on 13/23cm from JO72AK (view dir west)



Saturday morning now with all the other bands



First thunderstorm was approaching



A short visit from Jens DD0VD, who normally lives in JO71, but often qrv from other locators



Sunday morning....



Monday morning: on the way back a short visit at the Lake (Scharmützelsee)



First outdoor operation 2018 with 13 and 23cm. All equipment works.

During the contest I could not handle all the QSO requests, as single OP with all the bands.

Hope I can come back next year in june with a second OP (Harald DL9GBH/P).

See you later in the year from JO41/51/71/74

VY 73

Lorenz

DL6NCI